

Social sustainability assessment in societies with decreasing populations

I=PAT vs. SATOYAMA: Paradigms of SD indicators Shun Sato

Population decline in Japan and Sustainability Xiang Li

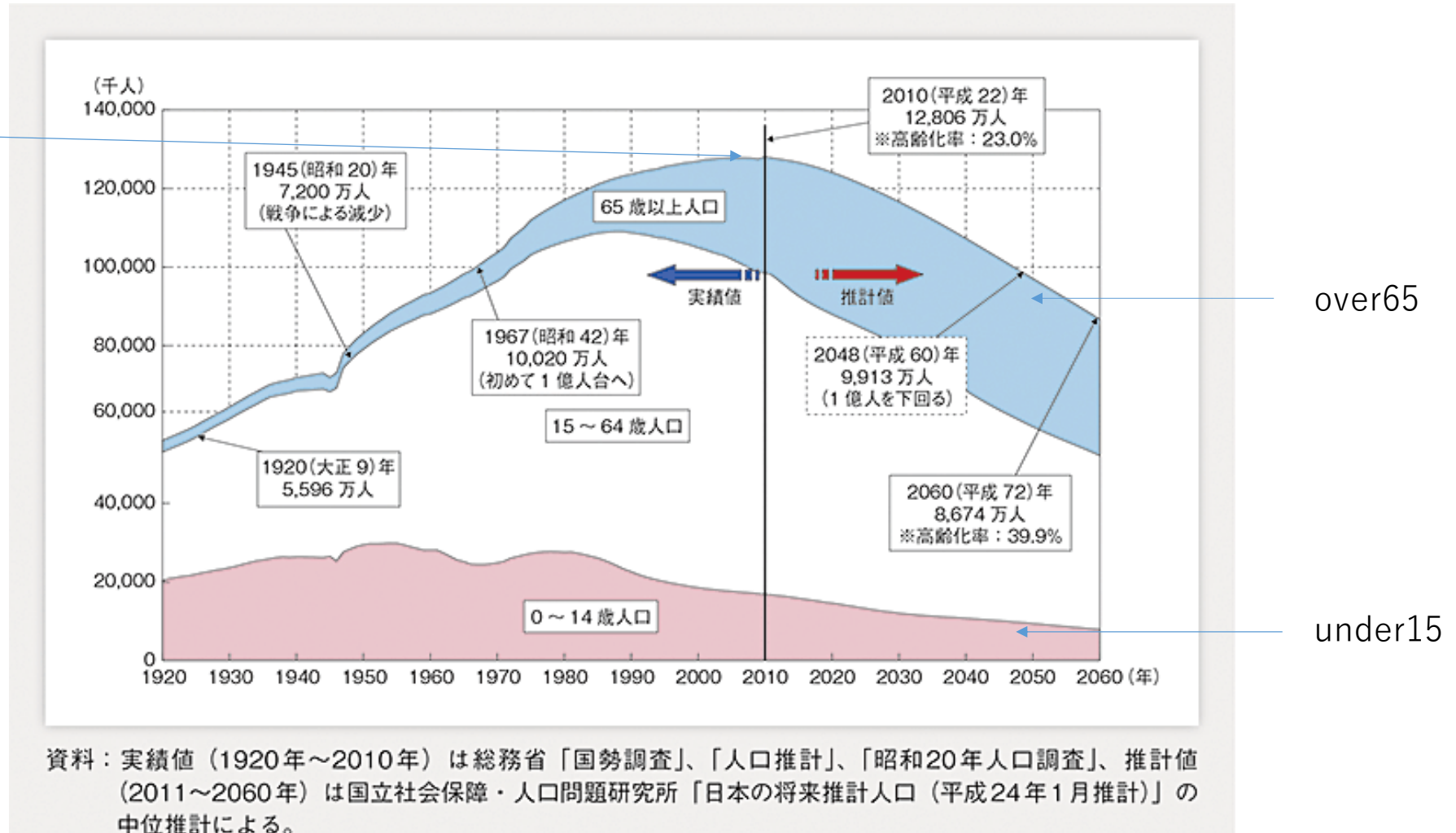
The political involvement of future generations Fumihiko Miyazaki

Residents' recognition of local information supply Hiroaki Shimizu

Coordinator Hidefumi Kurasaka

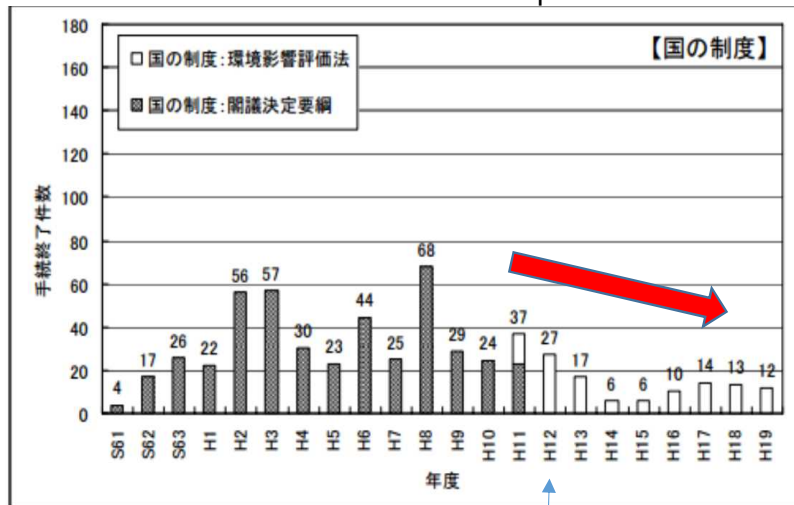
Population decreasing society in Japan

The peak was in 2008.



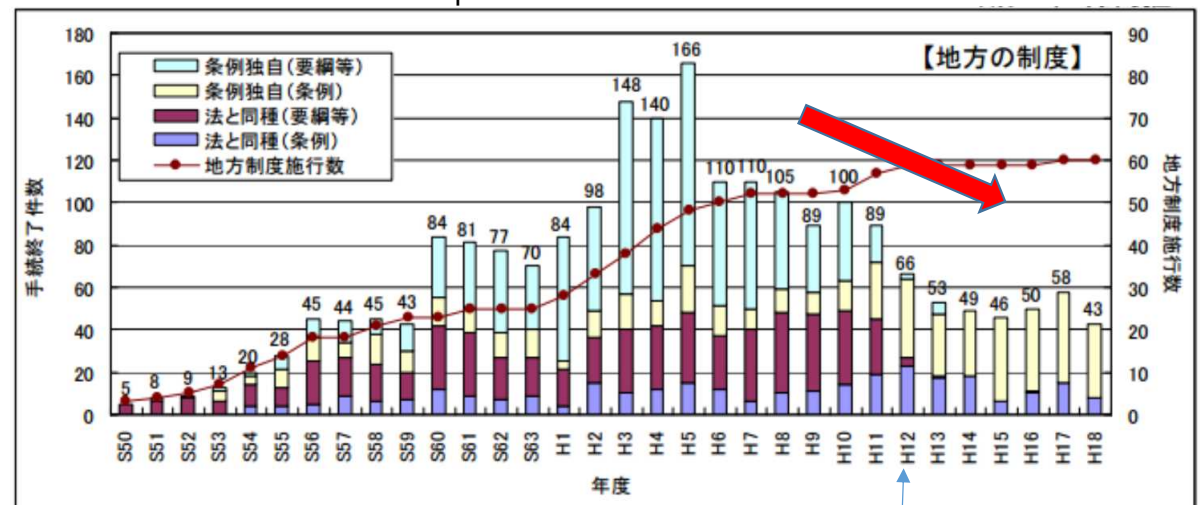
Impact Assessment Business is the declining business In population decreasing societies?

No. of National EIAs in Japan



2000

No. of Local EIAs in Japan



2000

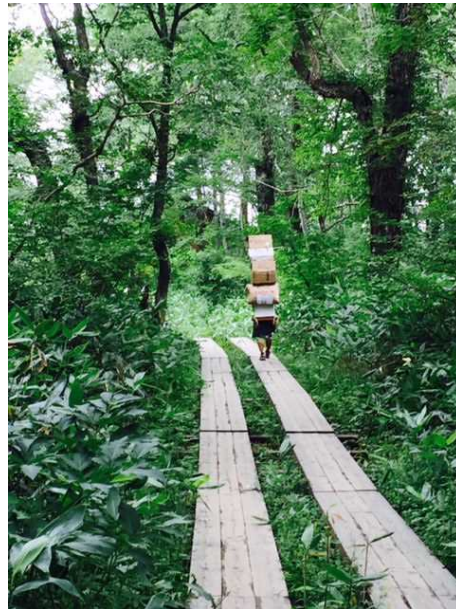
There are bad impacts and good impacts!



In population decreasing societies, we are in danger of loosing “good impacts”.

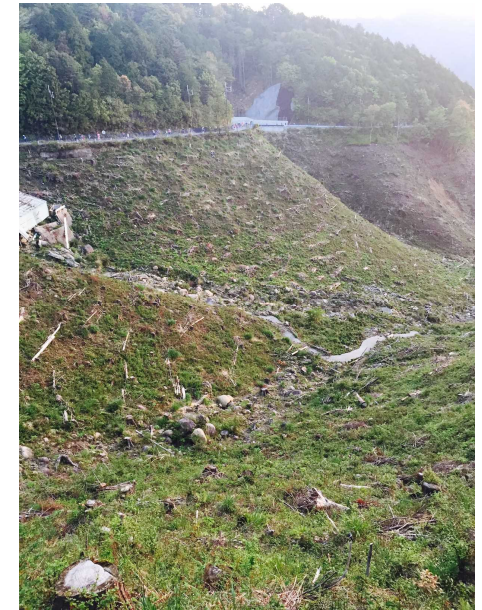
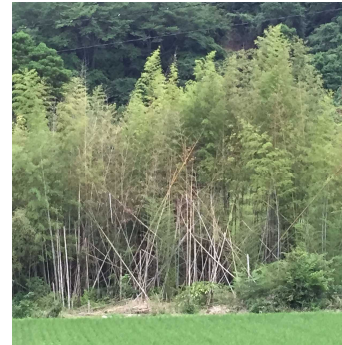
Good impacts

Maintenance
/ Care



Loosing Good
impacts

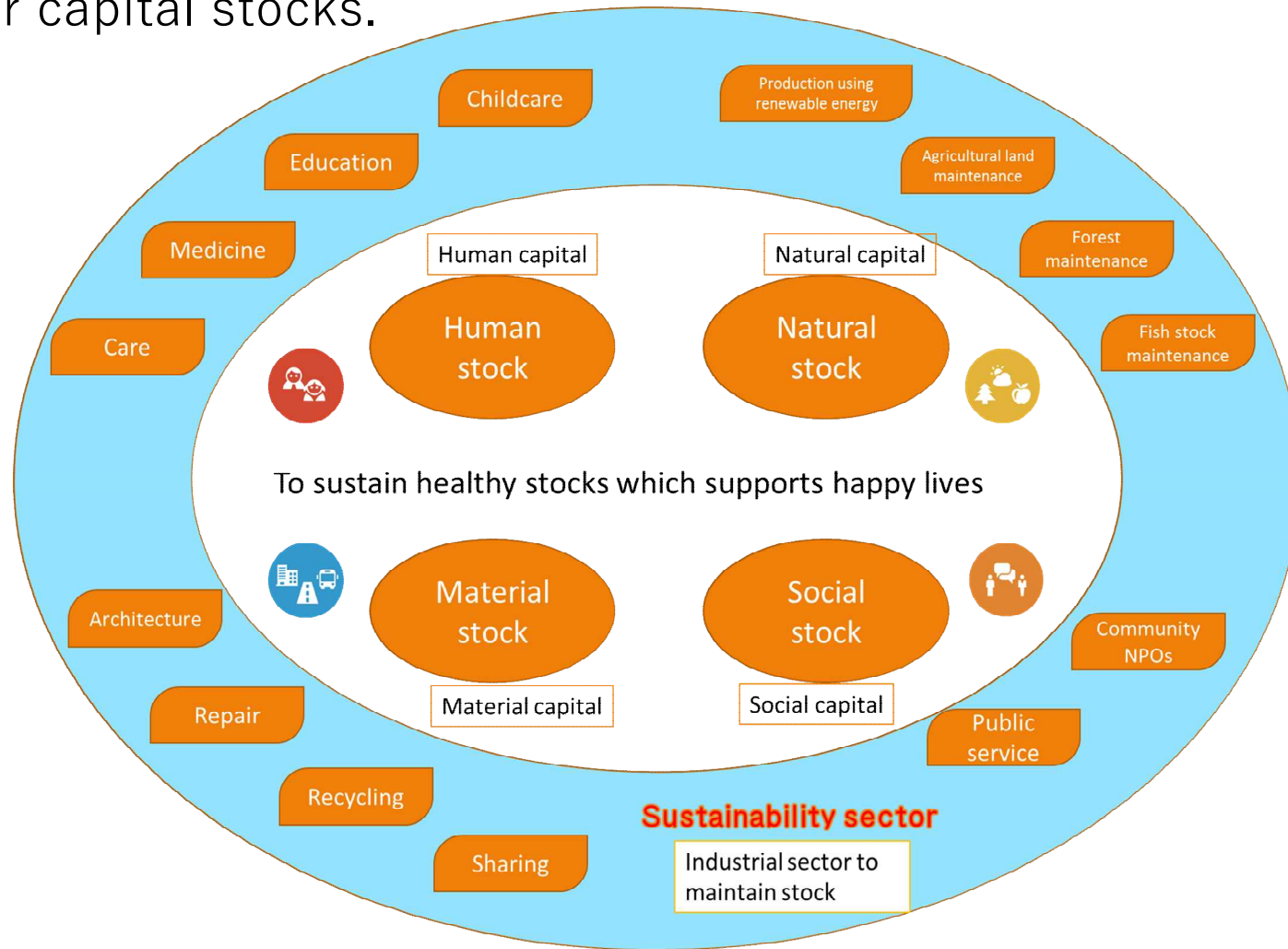
degradation
of nature



The “good impacts” are not only for the environment, i.e. Natural Capitals.
All the four capital stocks are necessary to be take care.



In population decreasing societies, we should keep “good impacts” on four capital stocks.





We are developing **future simulators** in order to identify challenges to community stock in 25 years' time.

Future simulators

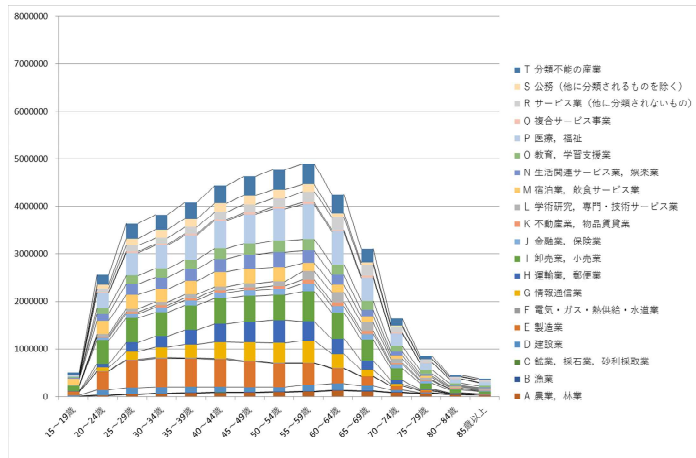
Assessment of No Action

Industrial structure simulator

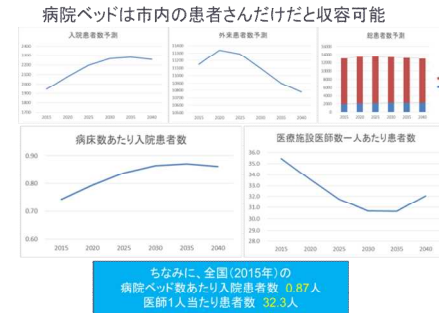
The number of people in work by industry, 2040 (Japan)

84.7% (2040/2015)
Population 107,275,850

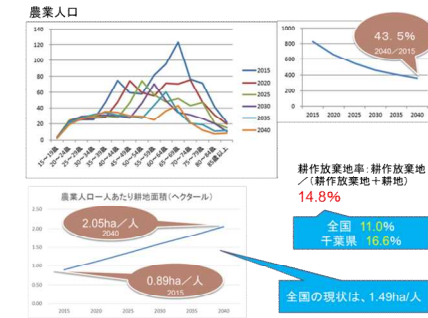
78.2% (2040/2015)
Employed people 44,897,751



Human capital simulator

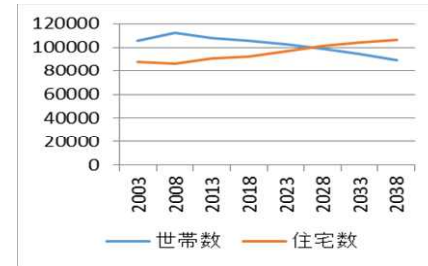


Natural capital simulator



Housing simulator

The number of households and houses (Ichihara City)



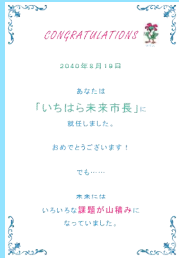
Finance simulator



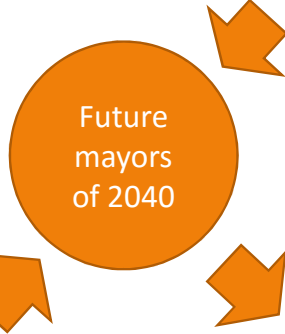
A future workshop in which high school and junior high school children, as future mayors of 2040, give advice to current mayors

Future workshop

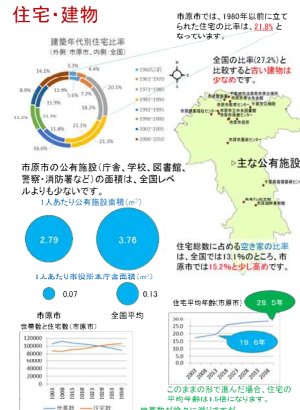
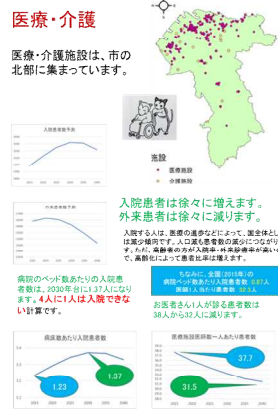
Public Involvement



A scene from 'Ichiyara Future Workshop'



Various research findings



Walk around town

Future Map of Town



Examination of policy recommendation



Results of the junior high school year 3 group



The current mayor and future mayors together

いちはら未来ワークショップでの提言

人口・子育て・保育 産業(雇用/農業/その他) 学校・教育 歴史 情報・PR・観光・イベント 高齢化/介護/医療 つながり 空き家 小浜鉄道 ゴルフ場 南部活性化 自然/環境化 ごみ 市政改善 財政 その他

<http://opossum.jpn.org/english/>



OPoSSuM

The research and development is named 'OPoSSuM,' an abbreviation of 'Open Project on Stock Sustainability and Management,' which sounds like the animal, 'opossum.' Our aim is to make the project accessible to all.

The project is funded by the Japan Science and Technology Agency (JST) under its Strategic Basic Research Programs, 2014 New Research Development Area.

Attention: Professor Kurasaka, Graduate School of Humanities and Social Sciences, Chiba University, 1-33 Yayoi Town, Inage Ward, Chiba City, 263-8522
Tel. & Fax.: 043-290-3585